

Swallow

Based on *Eiderdown*
by Steve Swallow

B♭ Instruments

LEVEL 6

♩ = 174

C#7alt

F#



D-7

A-



C#7alt

F#



D-7

A-



A-7

D7

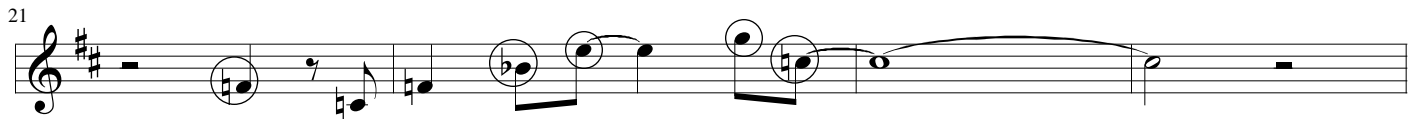
GMaj7



G-7

C7

FMaj7



F#°

F-6

C/E

A-7

D7



GMaj7

B7(b9)

E-7

A-7

D7



C#7alt

F#



D-7

A-

